

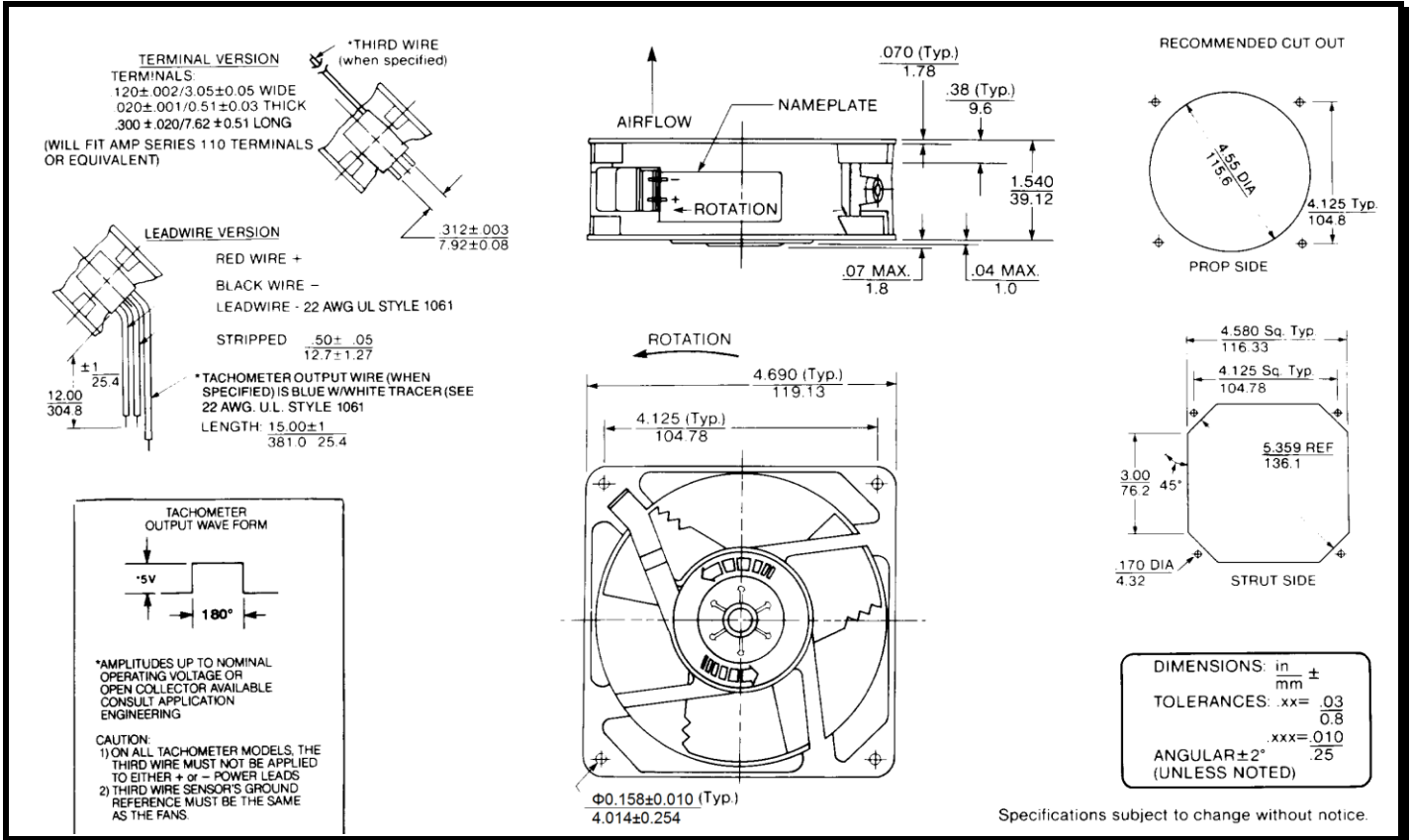
SPECIFICATIONS

Customer : Comtech EF Data
Model Number: MDD24K1A5-E2
Part Number: 17001594A

Version: 00
 Jan 6, 2020



Mechanical Drawing:



Motor:

Nominal Voltage = 24 vdc
 Operating Voltage Range = 16 - 32 vdc
 Running Current = 0.34 amps
 Locked Rotor Current = 0.75 amps
 Running Power = 8.2 watts
 Average Speed = 3650 rpm
 Bearings = Ball
 Air Flow = 125CFM
 Acoustic = 53.5 dBA

Construction:

Venturi: Die-Cast Aluminum, Black
 Propeller: Plastic, Black, UL 94V-0

Life Expectancy:

This fan is designed for continuous duty life of 55,000 hours at 70°C.

Termination:

12"±1" (304.8±25.4mm) 22AWG UL1061 Leadwires
 Red = Power(+)
 Black = Return(-)
 Blue = Tach output
 Yellow = Voltage control

Additional Features:

Brushless DC Motor
 Locked Rotor Protection
 Polarity Protected
 Automatic Restart Capability
 Operating Temperature:
 Storage Temperature:
 Environmental Protection:

-10°C to 70°C
 -40°C to 85°C
 Type 2(IP55)

TACHOMETER:

Output: Open Collector
 Ic: 20 mA max.
 Vcc: 28 Vdc max.
 Pulses per Revolution: 2
 Isolated: No

Speed Control:

Amplitude: 0~12 Volts
 Response: 0 V, Off 1V, Start
 1V~11V, linear ramp
 >11V, Full speed or Open leads, Stop

Agency Approvals:

UL, CUL, CE

PQ Curve:

